



1888

TENUTA CLEMENTINO

SABAUDIA, CIRCEO NATIONAL PARK

*“Here on the shore of the sea we silently pushed the ship into a safe
harbour, where a god came to guide us.”
(The Odyssey, Canto X, 140)*

TENUTA CLEMENTINO



Tenuta Clementino is a natural oasis that offers unforgettable experiences. History, environment, archaeology and sustainable activities concentrated in a single ecosystem. A place to stay, to organise your events, to enjoy privacy and relax, a stone's throw from Rome, in the heart of the Circeo National Park. The endless dunes of Sabaudia, the calm waters of Lake Paola and the tree-lined slopes of Mount Circeo frame moments destined to remain in the memory.



THE PROPERTY

The property covers about 8 hectares within the Circeo National Park. It is suspended between the sea and Lake Paola and is crossed by canals that move with the tides.



Two large pinewoods, Mediterranean undergrowth, the slopes of Mount Circeo and numerous artefacts from the Roman Age create a timeless atmosphere. The property features an oval seawater pool moved by tidal currents.



ACCOMODATIONS

Our accommodation services include two options: The **Villa** and the **Guardiania**.

The **Villa** is a historical residence situated on an island between two canals, at the junction between the Tyrrhenian Sea, the promontory of Monte Circeo and Lake Paola.

The **Guardiania** is a simpler and more functional accommodation, a few steps from the Sabaudia Dunes beach. The beach can be reached on foot by both accommodations, along a short path through the dunes and Mediterranean vegetation.



LA VILLA

The **Villa** is a historical residence situated on a small island between two canals, in a unique position where the Tyrrhenian Sea, the promontory of Mount Circeo and Lake Paola meet. Built by the Scalfati family in the 1950s as part of a larger project to redevelop the fish-farming activities carried out in the basin, the **Villa** was the main residence of the owners of the lake. Sheltered to the south by the slopes of Mount Circeo, the **Villa** is situated on a gentle hill that offers a splendid view of the gentle waters of the lake to the north. The beach is only 400 metres away and can be reached by following a path through the coastal dune.



The **Villa** has two floors: on the ground floor there is a large living room, dining room and kitchen, as well as a twin bedroom and a bathroom. On the first floor there are four double bedrooms and two bathrooms. The **Villa** can therefore accommodate up to 10 people in five double bedrooms.

In the garden there is a patio of about 60 square metres with an outdoor sitting area and a long dining table. The island that surrounds the villa has an area of about five hectares, covered with pine forests, woods, canals and bridges.

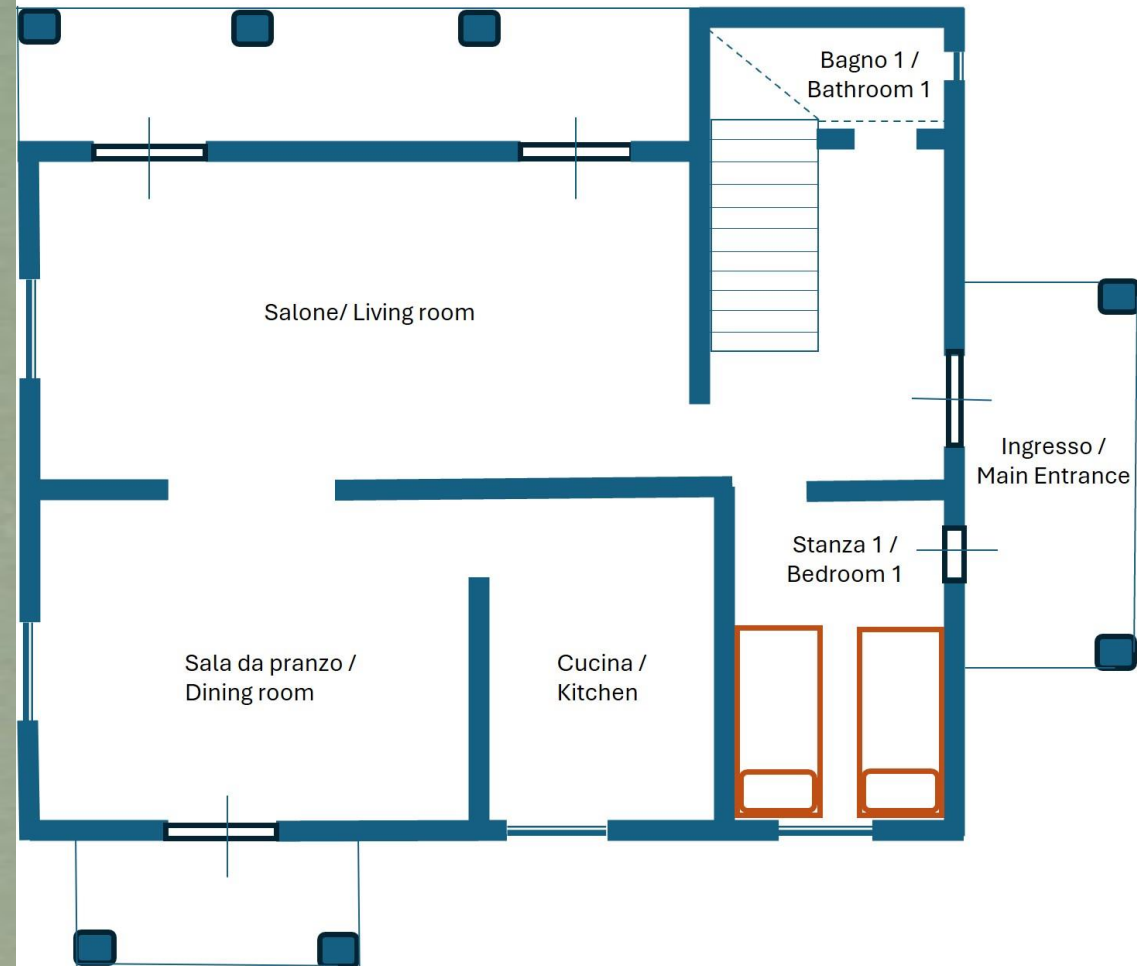
THE VILLA'S ROOMS

The Villa's rooms are elegantly decorated, with antique furniture recalling the history of the property

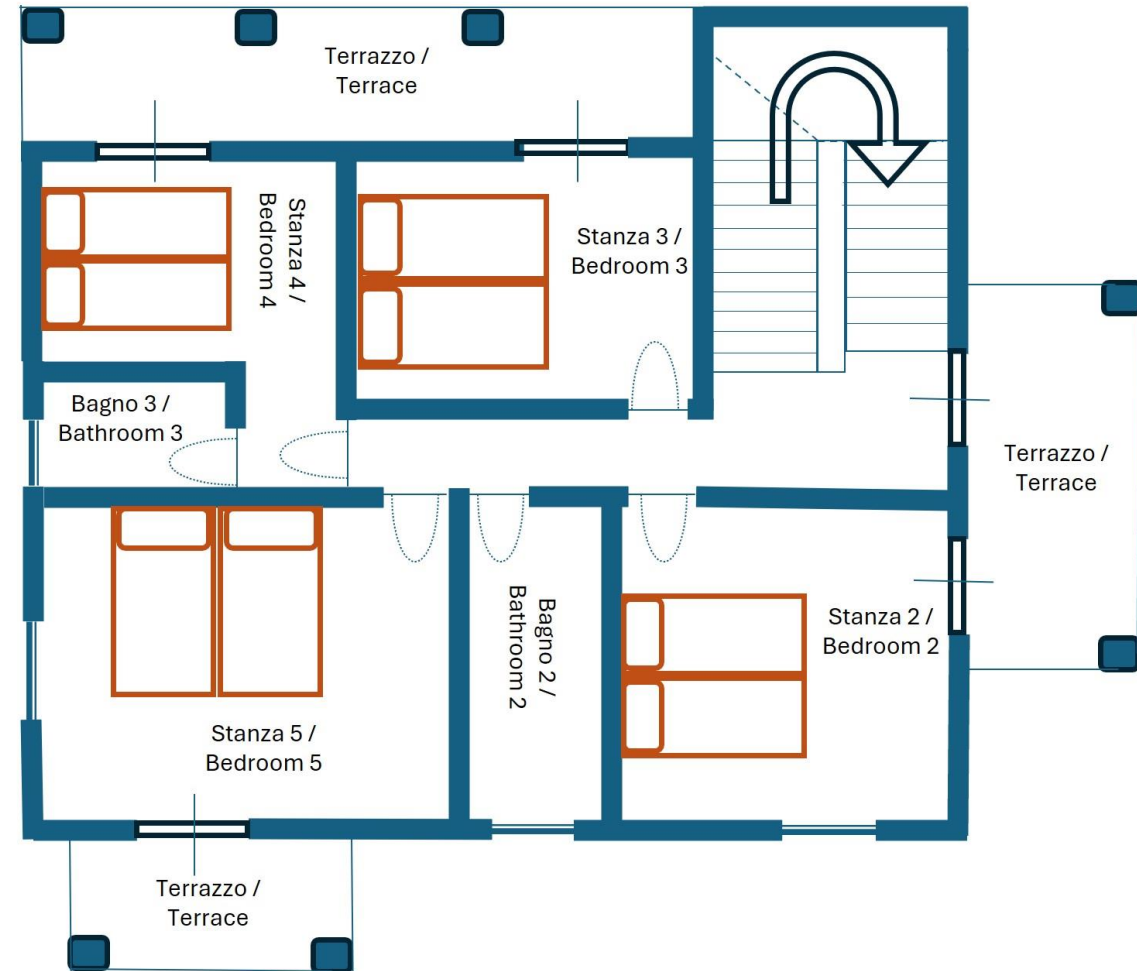


VILLA'S FLOOR PLAN

Piano terra / Ground Floor



Primo Piano / First Floor



LA GUARDIANIA

The **Guardiania** is an old fisherman's post used to control the secondary canal of Paola. Recently renovated, it is situated on the coastal dune and dominates the junction of Lake Paola and the secondary canal. The **Guardiania** is on two floors and has four double rooms, each with its own bathroom. One of the four rooms has a kitchen and a private part of the garden with an outdoor dining table. There is a patio and a large outdoor area with outdoor loungers. All rooms have air conditioning, television and minibar.

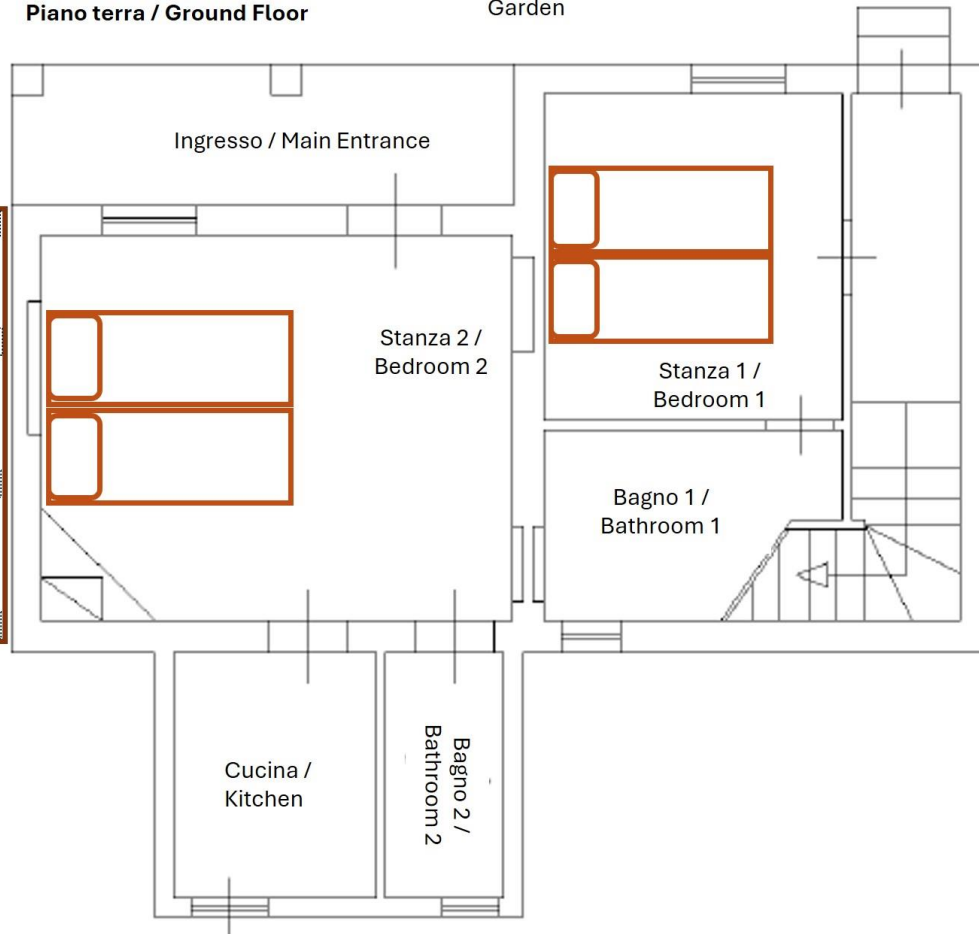


GUARDIANIA'S FLOOR PLAN

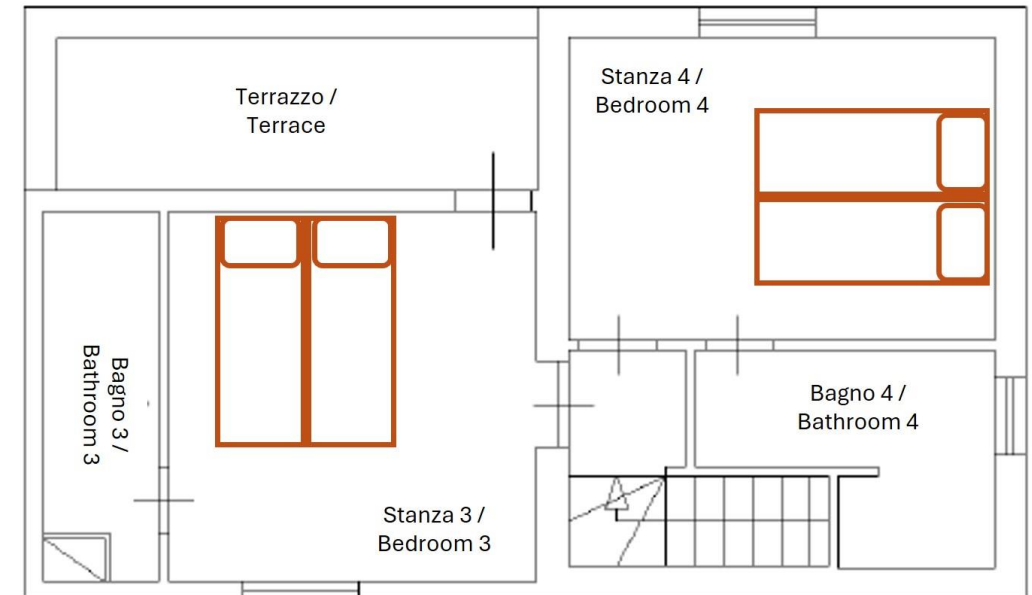
Piano terra / Ground Floor

Giardino /
Garden

Giardino /
Garden



Primo Piano / First Floor



EVENTS AND ACTIVITIES

Weddings, corporate retreats, customised events, yoga and meditation courses, concerts, exhibitions and presentations can all be organised on the estate. In addition, the waterways that wind through the ancient Roman ruins make it possible to reach the Tyrrhenian Sea directly from the indoor facilities. The variety of environments, views, landscapes and service areas make the Tenuta extremely flexible for every need. Trekking on Mount Circeo, horse-riding, e-bike excursions and cultural visits: the surroundings offer an infinite number of experiences.



PROPERTY MAP



CONTACTS

Tenuta Clementino

Via Casali di Paola 6

04016 - Sabaudia (LT)

Circeo National Park

Email: info@tenutaclementino.it

Ph.: +39 329 7087989 - +39 347 6313397

www.tenutaclementino.it



SCAN ME

